



STORYTELLING, EMBODIMENT, AND THE ETHICS OF ANALYSING BEDOUIN ETHNOGRAPHY

PhD candidate Wesam Wekhyan

University of Bath: Department of Social Policy Sciences

SWDTP Data Analysis Webinar

Handling Data in Decolonial Research

Outline

- Context around my own research
- Handling multimodal ethnographic data
- Decolonial analysis as embodied and relational
- Why community accountability changes what "analysis" means



Research Context

THE BEDOUINS OF THE JORDAN VALLEY AND NEBO'S SLOPES

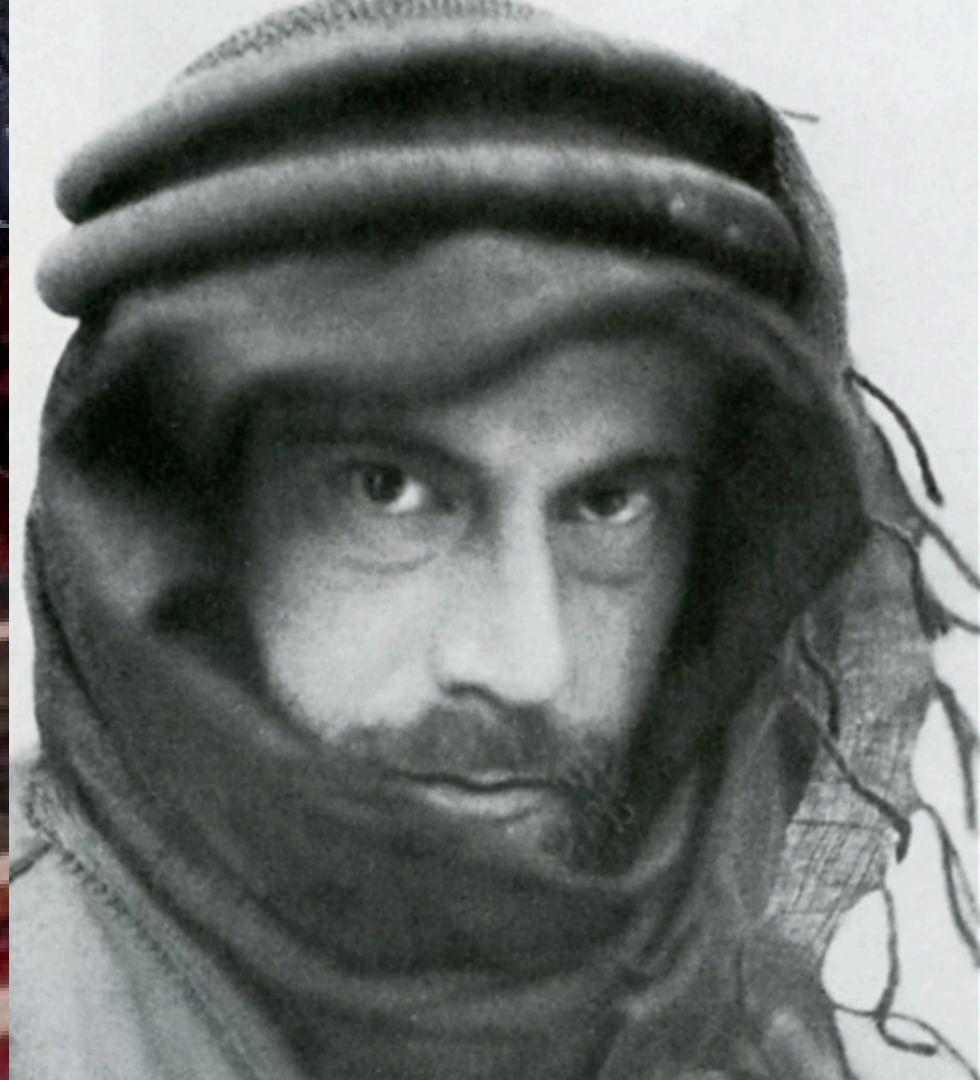


THE ROAD OF THE PILGRIMS FROM
JERUSALEM TO MOUNT NEBO

طريق الحجاج من القدس الى جبل نيبو



unesco
World Heritage Convention







A Badia Woman's Epistemology



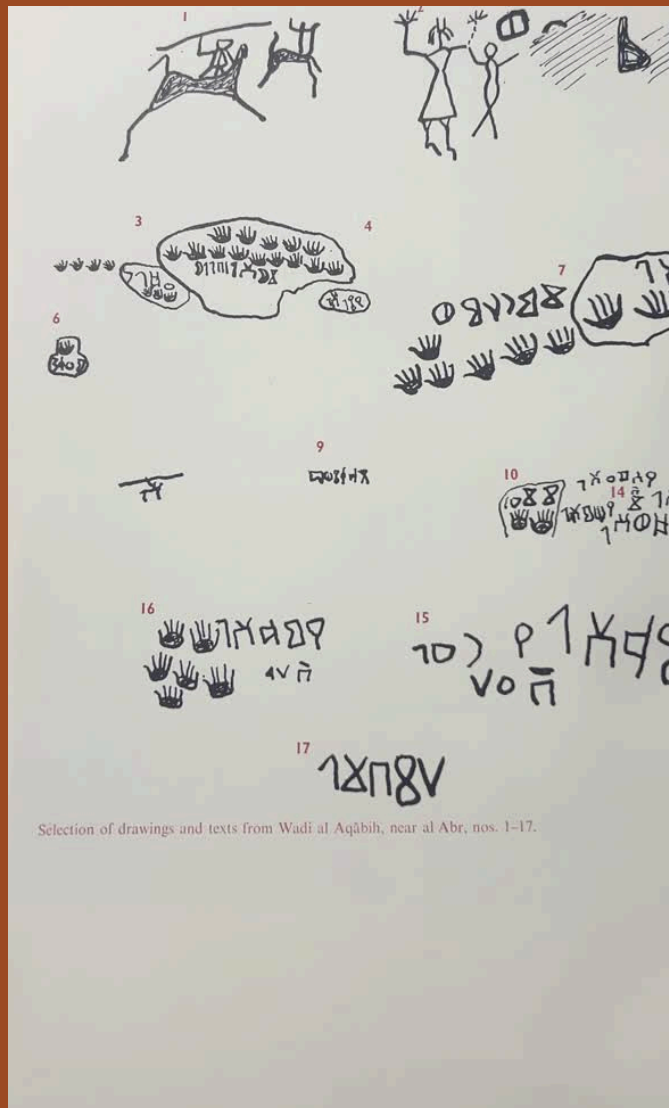
The Data Landscape: Multimodality and the Living Archive



Why conventional analysis was insufficient

When data does not fit the template.

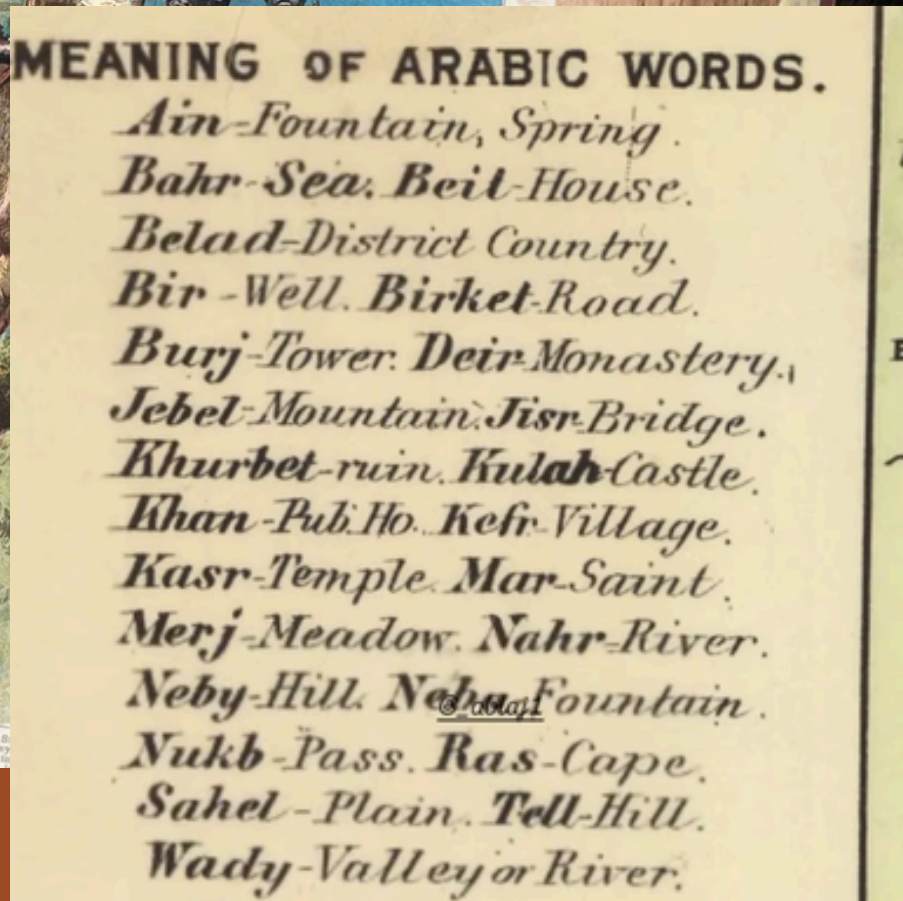
- Oral and visual storytelling exceeds text-based coding
- Meaning sits in performance, rhythm, tone, and relation
- Translation is across dialect, language, and form
- Bureaucratic academic formats can flatten living knowledge



Selection of drawings and texts from Wadi al Aqābih, near al Abr, nos. 1-17.



SUPPLEMENT TO THE DAILY GRAPHIC, APRIL 23rd, 1890





Epistemology: Unlearning Bureaucracy

- Researcher is not detached observer
- Embodiment is epistemic, not a flaw
- Shared language, kinship, memory, and responsibility shape analysis
- Giving back is part of the method, not an outcome added later



Ezwa: from archive to cooperative practice

- Ezwa as a cooperative community initiative
- Virtual archiving as collective remembering
- Workshops as spaces for talent, skills, and heritage storytelling
- Analysis continues beyond the thesis through community use



EZWA OPENING EVENT GAZDARA AND TA'LEELA

Join us at the Beidha by Mount Nebo

Date: 24 April 2026
2 PM - 9 PM

Included: Transport from the 7th circle
Amman, lunch, and dinner overlooking
Dead Sea.

Rate: FREE
Community donations are
welcome



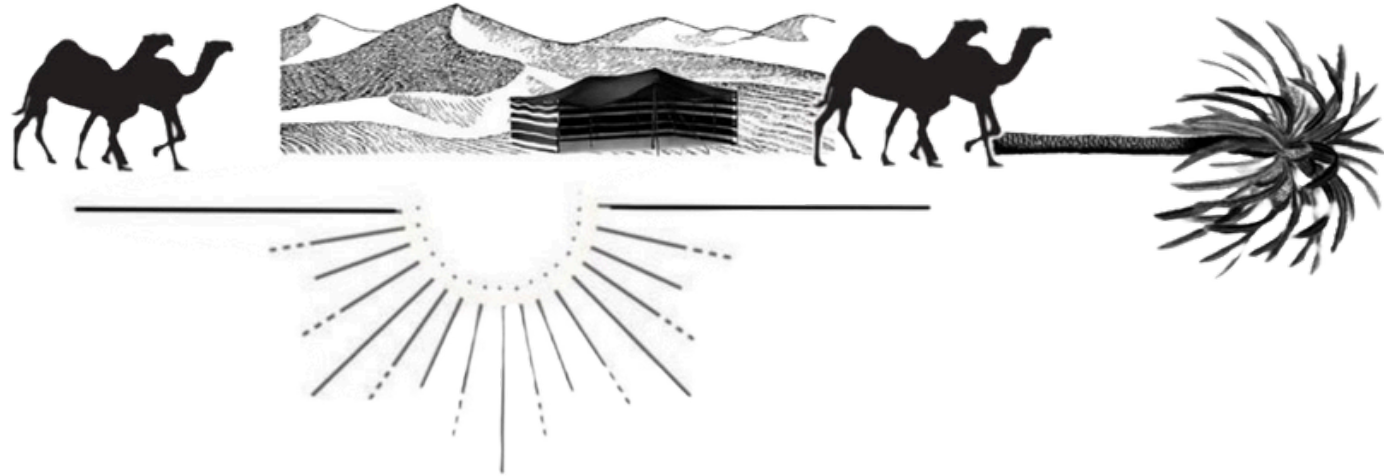
[3izwa](#)



[ezwa_alkfeir](#)



Whose Knowledge Counts in Sacred Landscapes?



A Badia Epistemology

- such as *tarbia* (kinship childrearing),
- *silat rahm* (spiritual relational ties),
- and *wajib* (communal traditions of duty).





The Practical Nature of Decoloniality

- Decolonial analysis must adapt to local epistemologies
- Writing can be only one part of analysis, not the whole of it
- Research becomes more meaningful when it also serves community futures